

Vector Wall Frames



Supplied in 9x Versions

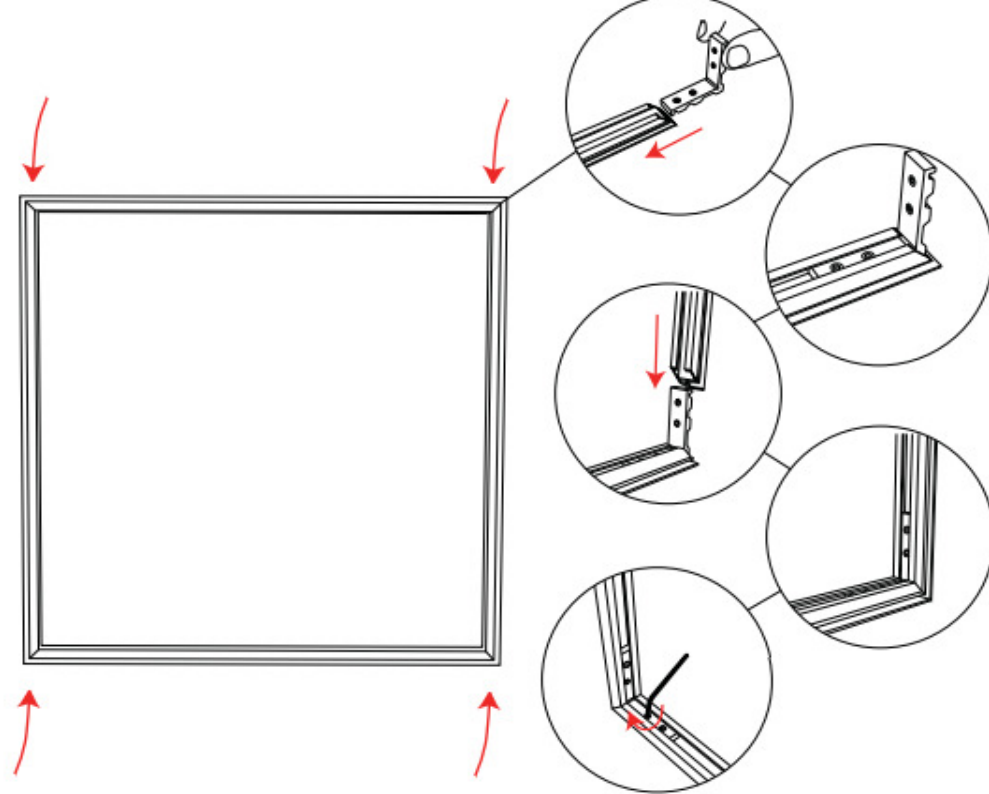
250mm x 250mm
500mm x 500mm
750mm x 750mm
1000mm x 1000mm

All details for dimensions of frame + Visible Graphic Sizes



Frame Assembly:

- 1 Gather all the components
- 2 Place them on a flat surface
- 3 Insert the corner brace in 1x straight
- 4 Tighten in place using the Allen key
- 5 Repeat this exercise for all 4x corners
- 6 Now introduce each corner
- 7 Tighten as you are going, using the Allen key
- 8 Congratulations - Frame fully assembled



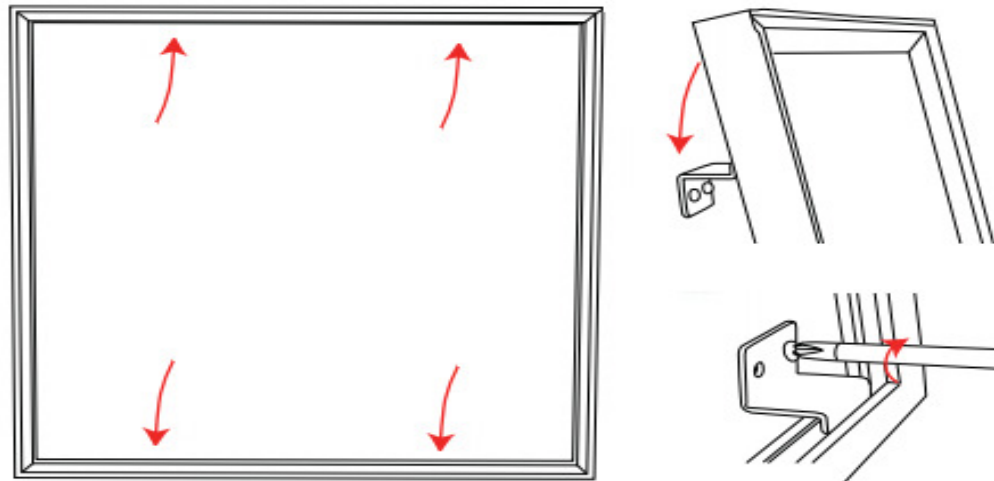
Graphic Fitting:

- 1 Once fully wall mounted
- 2 Start from the top with your graphic
- 3 Push into the frame slot
- 4 Pay attention to the corners!
- 5 Now keep pressing the graphic into place
- 6 Keep going until graphic fully attached / inserted
- 7 Congratulations - Graphic fully fitted

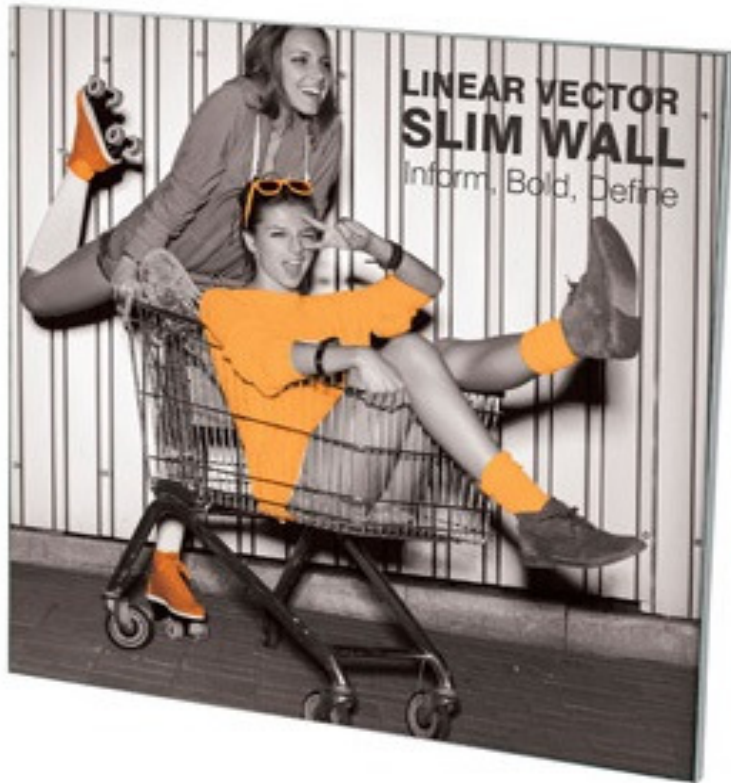
Frame attachment to the Wall

We jumped ahead here -
So, before adding the graphic

- 1 Decide the height of the frame
- 2 Mark the wall with a pencil
- 3 Drill , Raw. Plug, Bracket, screw into place
- 4 Measure for second top bracket
- 5 Drill , Raw. Plug, Bracket, screw into place
- 6 Repeat steps 2 to 5 for bottom brackets
- 7 Frame should now be fully connected to the wall
- 7 Now go to 'Graphic Fitting'



Vector Wall Frames - Dimensions



Ordering sequence:

- Step 1: Decide the option wanted
- Step 2: Create your order / payment
- Step 3: Allow 1x week for supply of order
- Step 4: Fabric is 'Not' supplied

Product =	
Website Ref =	Vector Wall 250mm x 250mm
Hardware Dimensions =	W250mm x H250mm x D20mm
Visible Graphics =	W250mm x H250mm
Total Graphics (Including Bleed) =	W258mm x H258mm

Product =	
Website Ref =	Vector Wall 500mm x 500mm
Hardware Dimensions =	W500mm x H500mm x D20mm
Visible Graphics =	W500mm x H500mm
Total Graphics (Including Bleed) =	W538mm x H538mm

Product =	
Website Ref =	Vector Wall 750mm x 750mm
Hardware Dimensions =	W750mm x 750mm x D20mm
Visible Graphics =	W750mm x H750mm
Total Graphics (Including Bleed) =	W788mm x H788mm

Product =	
Website Ref =	Vector Wall 1000mm x 1000mm
Hardware Dimensions =	W1000mm x H1000mm x D20mm
Visible Graphics =	W1000mm x H1000mm
Total Graphics (Including Bleed) =	W1038mm x H1038mm