



Projector 'Screens'



Details:

Manual projector screens are designed with a contemporary, minimalist style. The screens are a good choice for educational or corporate sector. The slow retraction mechanism will retract the fabric with ease.

Manufactured with a white case and white plastic end caps. They have a durable spring mechanism that can be rolled and re-rolled quickly and easily. Strong spring mechanism ensures that the screen fabric is kept taut to maintain the optimal image clarity.

All 3x projection screens come with a black border surround to increase the clarity of the projected image whether using data or high definition video. The black border perfectly complements the 0.8: 1 gain factor material, through combining these two essential components to maximise any projected image.

3 Year Warranty:

Should your screen develop a fault within 28 days of purchase and is reported to the manufacturer in this time period, If after their engineer has contacted you via telephone to try and resolve the issue and been unsuccessful, a new replacement unit will be sent to you.

For the remainder of the warranty on contacting the manufacturer they will arrange for an engineer to contact you to discuss the fault and try and resolve it in the first instance over the telephone. If the fault cannot be resolved over the telephone the screen will need to go back to the manufacturer to be inspected by an engineer.

Order Options:

- 1 We offer 3x Order Options
- 2 **Option 1 - see page 3**
- 3 **Option 2 - see page 4**
- 4 **Option 3 - see page 5**





Estate Agent Supplies

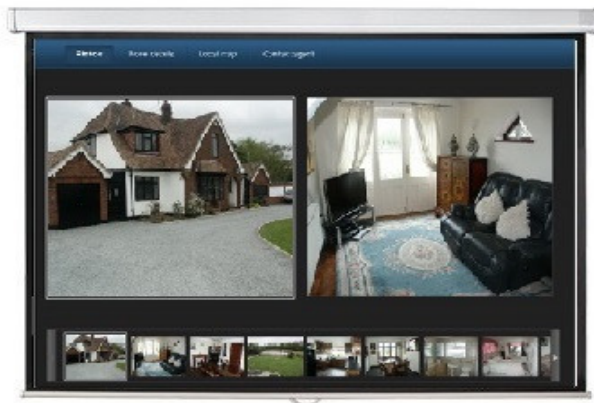
The main benefits for Projectors and Screens

Huge Picture + Document + Video captures

Giving the client that bit extra, be they the Seller or the Buyer!

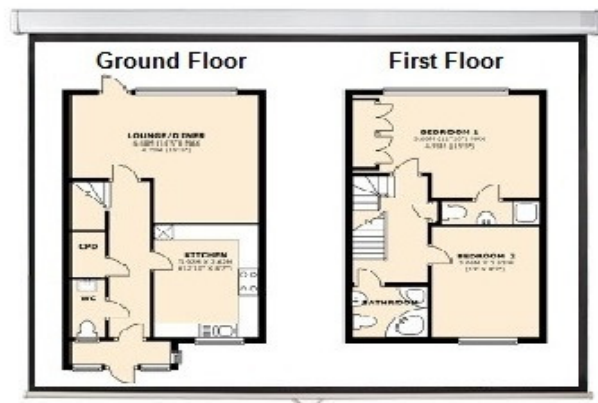
Property Highlighting

Perfect for revealing all your property portfolio
Huge pictures to help the clients decision!
Impressive for quick beaming to the screen!



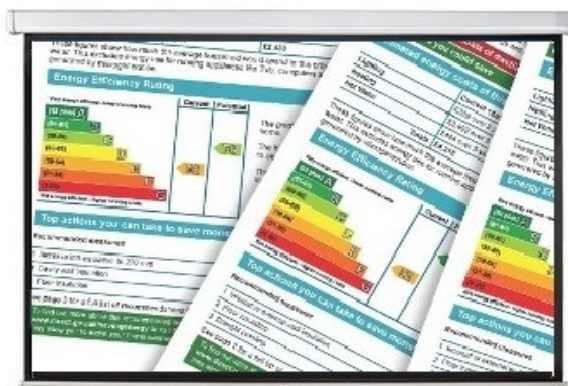
Floor Plans

Perfect for revealing all 'Floor Plans'
Huge pictures to help the clients decision!
Impressive for quick beaming to the screen!



Energy Details

Perfect for revealing all 'Energy Details'
Huge pictures to help the clients decision!
Impressive for quick beaming to the screen!



Floor Plans

Perfect for impressive 'Video's'
Huge pictures to help the clients decision!
Impressive for quick beaming to the screen!





Option 1 - Projector Screen 170cms x 106.2cms

Key Benefits	16:10 Aspect Ratio
Key Benefits	67.09 Inches Wide
Key Benefits	170.40 cm Wide
Key Benefits	79.11 inches Viewing Diagonal
Key Benefits	200.94 cm Viewing Diagonal

Details:

Slow retraction manual projector screens have been designed with a contemporary, minimalist style. The screens are a good choice for Estate Agents & Letting Agents + Durable spring mechanism that can be rolled and re-rolled quickly and easily, screen fabric is kept taut to maintain the optimal image clarity projection screens come with a black border surround to increase the clarity of the projected image whether using data or images or high definition video

Colour	White	
Aspect Ratio	16:10 Widescreen Format	
Viewing Height	106.50cms	41.93 inches
Viewing Diagonal	200.94cms	79.11 inches
Viewing Width	170.40cms	67.09 inches
Case Dimensions	W186.4cms x H9.3cms x L7.9cms	
Screen Type	Pull Down	
Wall Connection	2x Bolt to wall connectors 1x Bottom Gripper Connection	

Why add a Projector / Screen to your office?

If you are looking for a "Powerful & Successful Way" to advertise - then.....

Perfect for beaming "Street Maps" + "Company Logo" + "Property Interiors"
Perfect for beaming "Property Aspects" + "Kitchens" + "Bathrooms" + "Bedrooms"
Perfect for beaming "Gardens" + "Garages" + "Energy Graphs" + "Broadband Coverage"
Perfect for beaming "Video's" + "Walk Through"

Looking for a Projector?

If your looking for a projector, we also list these - in fact we offer 6x versions

Action = Open our website + search for "Projectors"



Option 2 - Projector Screen 203cms x 126.9cms

Key Benefits	16:10 Aspect Ratio
Key Benefits	79.92 Inches Wide
Key Benefits	203 cm Wide
Key Benefits	94.25 inches Viewing Diagonal
Key Benefits	239.40 cm Viewing Diagonal

Details:

Slow retraction manual projector screens have been designed with a contemporary, minimalist style. The screens are a good choice for Estate Agents & Letting Agents + Durable spring mechanism that can be rolled and re-rolled quickly and easily, screen fabric is kept taut to maintain the optimal image clarity projection screens come with a black border surround to increase the clarity of the projected image whether using data or images or high definition video

Colour	White	
Aspect Ratio	16:10 Widescreen Format	
Viewing Height	126.90cms	49.96 inches
Viewing Diagonal	239.40cms	94.25 inches
Viewing Width	203cms	79.92 inches
Case Dimensions	W220.4cms x H9.3cms x L7.9cms	
Screen Type	Pull Down	
Wall Connection	2x Bolt to wall connectors 1x Bottom Gripper Connection	

Why add a Projector / Screen to your office?

If you are looking for a "Powerful & Successful Way" to advertise - then.....

Perfect for beaming "Street Maps" + "Company Logo" + "Property Interiors"
Perfect for beaming "Property Aspects" + "Kitchens" + "Bathrooms" + "Bedrooms"
Perfect for beaming "Gardens" + "Garages" + "Energy Graphs" + "Broadband Coverage"
Perfect for beaming "Video's" + "Walk Through"

Looking for a Projector?

If your looking for a projector, we also list these - in fact we offer 6x versions

Action = Open our website + search for "Projectors"



Option 3 - Projector Screen 234cms x 146.3cms

Key Benefits	16:10 Aspect Ratio
Key Benefits	92.13 Inches Wide
Key Benefits	234 cm Wide
Key Benefits	108.65 inches Viewing Diagonal
Key Benefits	275.97 cm Viewing Diagonal

Details:

Slow retraction manual projector screens have been designed with a contemporary, minimalist style. The screens are a good choice for Estate Agents & Letting Agents + Durable spring mechanism that can be rolled and re-rolled quickly and easily, screen fabric is kept taut to maintain the optimal image clarity projection screens come with a black border surround to increase the clarity of the projected image whether using data or images or high definition video

Colour	White	
Aspect Ratio	16:10 Widescreen Format	
Viewing Height	146.30cms	57.60 inches
Viewing Diagonal	275.97cms	108.65 inches
Viewing Width	234cms	92.12 inches
Case Dimensions	W255.4cms x H11.2cms x L8.6cms	
Screen Type	Pull Down	
Wall Connection	2x Bolt to wall connectors 1x Bottom Gripper Connection	

Why add a Projector / Screen to your office?

If you are looking for a "Powerful & Successful Way" to advertise - then.....

Perfect for beaming "Street Maps" + "Company Logo" + "Property Interiors"
Perfect for beaming "Property Aspects" + "Kitchens" + "Bathrooms" + "Bedrooms"
Perfect for beaming "Gardens" + "Garages" + "Energy Graphs" + "Broadband Coverage"
Perfect for beaming "Video's" + "Walk Through"

Looking for a Projector?

If your looking for a projector, we also list these - in fact we offer 6x versions

Action = Open our website + search for "Projectors"

