

Single A4 Landscape LED Freestanding Displayer (4x A4L)

Image 1 - LED Panels - Front Image



Consists of = **4x A4 Landscape LED Panels**
Displays = **4x A4 Landscape Documents**
Easy Changes = **Magnetic pull-down frames**
Solid Feet = **Simple Bolt-to-the-floor-action**

Image 2 - LED Panels - Rear



Consists of = **2x Galvanised Posts**
Consists of = **2x Galvanised Feet**
Consists of = **1x Plug-N-Play Power Connector**
Consists of = **Simple Bolt-to-the-floor-action-feet**

Single A4 Landscape LED Freestanding Displayer (4x A4L)

Image 3 - LED Panels - Front Image



Consists of = **3x A3 Landscape LED Panels**
 Displays = **3x A3L - or 6x A4P Documents**
 Easy Changes = Magnetic pull-down frames
 Solid Feet = Simple Bolt-to-the-floor-action

Image 4 - Measurements:



Overall:

H900mm x W795mm

LED's

4x 'A4 Landscape' LED's
 (W335mm x H240mm)

Other (approx sizes)

Rear Poles = 2x H860mm
 Bases = 2x 160mm x 60mm
 Bolts = 4x M12x 65mm
 Power = 1x 60W Transformer

Image 5 - NON-LED Panels - Rear-Side



1. Nuts & Bolts are supplied = 4x
2. Designed to be bolted onto a Window Sill / Shelf - or - Floor
3. Rotate Feet + Pencil Mark the holes + Drill Holes + Add Nuts & Bolts
 (IF adding to the floor, you will need to purchase other bolts)
5. Then, add the 60W transformer - that's it

Single A4 Landscape LED Freestanding Displayer (4x A4L)

Image 6 - Back-Lit Film & Paper

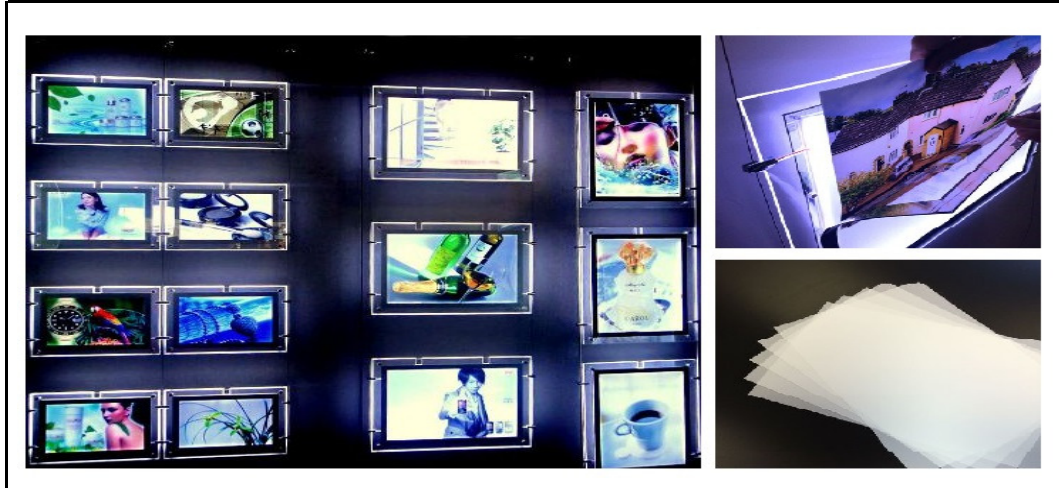


Image 7 - Transformer 60W



Delivery - Always by a Pallet Service:

1. Delivery = Due to Size + Weight + Fragile Nature - Delivery is always by a pallet Delivery Service
2. Delivery = Client must be able to take a Pallet Delivery Service
3. Delivery = Service is to the outside door - 'Not' within the property

Fitting this display is very easy

1. Once the pallet has been delivered, remove all packaging
2. The Legs maybe delivered, unconnected, this is due to possible pallet size utilised
3. If delivered unconnected, remove the wing nuts only, slide bolt into post holes, re-tighten (Don't over tighten)
4. Refer to "Image 5" - Raise the display to the required position with the help of 2x assistants, now mark the base fixing holes, using a pencil
5. Now remove display - drill holes - now place display over the holes and secure into place with the (supplied) M15 Nuts & Bolts
6. Now before adding the 'Power Transformer' - plug a 'Surge Protector' (not supplied but highly recommended)
7. Now, plug transformer into the display, then the, Surge Protector - Turn on the power - **That's it**
8. Documents can be added, even with the display fully illuminated - Next page covers **Back-Lit Film & Paper**

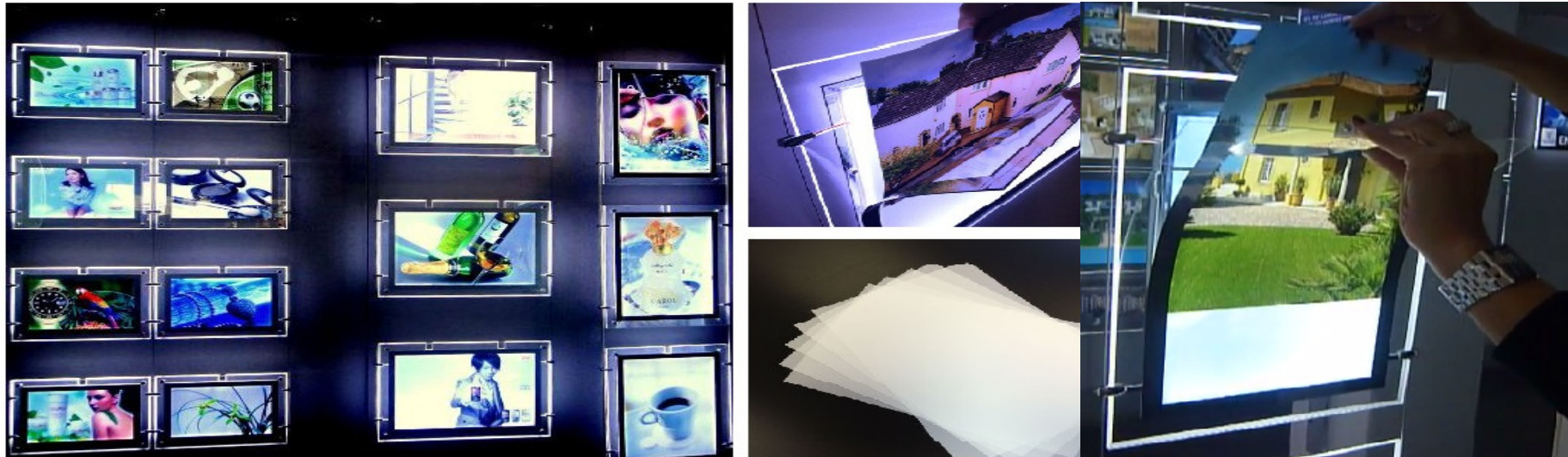
Professional Finish:

1. If you want to hide the transformer
2. Drill extra hole, to allow cable through
3. Then, hide transformer under the plinth
4. Then, plug it in, for a "Pro finish"

Caution , just ensure transformer has....
adequate air flow to avoid it over heating!

Back-Lit Paper / Film

To help create a stunning LED Display - It is highly recommended that Back-Lit Paper - or - Back-Lit Film is utilised



Back Lit Paper for LEDs

Choice 1 - Website ref: **PAPER**

(120gsm Brilliant White Gloss Coated Paper) - '**Budget Choice**'

Supplied in A3 + A4 + In Packs of 250 or 500x Sheets

Choice 2 - Website ref: **PAPER135**

(135gsm Brilliant White Gloss Coated Paper) - '**Budget Choice**'

Supplied in A3 + A4 + In Packs of 250 or 500x Sheets

Back Lit "Film" for LEDs

Choice 1 - Website ref: **FILM**

(125gsm Milky both sides) - '**The Silver Winning Choice!**'

Supplied in A3 + A4 + In Packs of 50 or 100x Sheets

Choice 1 - Website ref: **FILM - 160**

(160gsm Milky + Clear) - '**The Gold Winning Choice!**'

Supplied in A3 + A4 + In Packs of 50 or 100x Sheets

Sample Packs:

If you are unsure if Back-lit Film is compatible with your printer, always order a sample pack first - Website Ref: **SAMPLES-A4**